

## 340AJ Articulating Boom Lift

### Diesel Powered Articulating Boom Lift Series

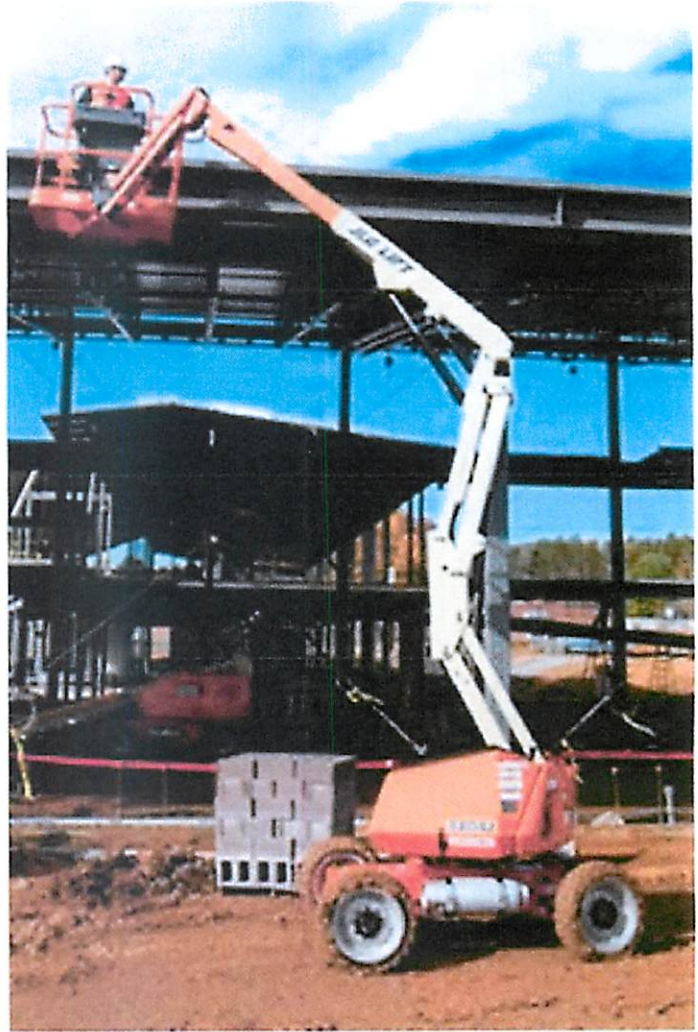
### 450 Series Articulating Boom Lift

#### Features

- Your cost-effective alternative for mid-height applications
- Best in class off-road performance
- Environmentally friendly machine with lower fuel consumption and fewer potential leaking points
- Robust gull-wing steel hoods protect 18.5kw combustion engine
- Enables 3 machines to be transported on 12m trailer
- Attractive entry level combustion boom lift with lowest weight in this class

#### Quick Specs

- Platform Height Elevated — 10.35 m
- Platform Capacity — 230 kg
- Overall Width — 1.93 m



## 340AJ Articulating Boom Lift Specifications

#### Reach Specifications

Platform Height	33' 10" / 10.31 m
Horizontal Reach	19' 11" / 6.06 m
Up and Over Height	17' / 5.17 m
Swing	355° Non-Continuous
Platform Capacity	500 lb / 227 kg
Platform Rotator	180° Hydraulic
Jib (Range of Articulation)	144° (+84, -60)

#### Dimensions

Platform Size	30 x 60" / 0.76 x 1.22 m
Overall Width	6' 4" / 1.93 m
Tailswing	2" / 5.08 cm

\*Certain options or country standards increase weight.

\*\*\*Ground bearing pressure applies to standard tires.

<b>Stowed Height</b>	6' 7" / 2 m
<b>Stowed Length</b>	18' 2" / 5.52 m
<b>Wheelbase</b>	6' 2" / 1.87 m
<b>Ground Clearance</b>	10" / 23.7 cm
<b>Weight*</b>	9,700 lb / 4,400 kg
<b>Max. Ground Bearing Pressure***</b>	151 psi / 10.6 kg/cm <sup>2</sup>

#### Power Source

<b>Dual Fuel Engine</b>	PSI/GM, 28.7 hp / 21.4 kW
<b>Diesel Engine</b>	Kubota D1105 24.8 hp / 18.5 kW
<b>Fuel Tank Capacity</b>	13 gal / 498.2 L
<b>Hydraulic Reservoir</b>	20.6 gal / 77.9 L
<b>Auxiliary Power</b>	12V DC